


**Jubiguard**

# BITUELASTO

**HIGH BUILD ELASTOMERIC, BITUMEN MODIFIED  
ANTI- ROOT LIQUID-APPLIED MEMBRANE**


JUBIGUARD BITUELASTO is a one-component, fully-bonded liquid membrane for versatile waterproofing and roofing. Scientifically formulated with bitumen-modified elastomeric coating, it offers >700% elongation. This high-performance coating cures to a flexible, elastic, impermeable, and root-resistant waterproof membrane.



## Application Areas

- Useful as a waterproof and protection coating on Concrete And Brick Foundations, Retaining Walls, Podiums, Inverted Roofs, Terrace Garden etc.
- Can also be applied to Timber, Metals, etc.
- Damp-proofing of regular Concrete and Masonry Structures.
- Can be easily applied on surfaces like Concrete and Asbestos as it easily takes the contours of the surface.



## Technical Details

Properties	Values	Test Standards
Colour	Black	-
Consistency	Thixotropic Paste	-
Density	1.00 ± 0.05 g/ml	ASTM D 1475
Solid Content	56 ± 5%	ASTM D 1644
Viscosity (SPL7, RPM20)	40000-50000 cPs	ASTM D 2196
Bonding strength with concrete	0.68 N/mm <sup>2</sup>	ASTM C 882
Tear Resistance A – with fiber B – without fiber	18.60 N/mm 12.69 N/mm	ASTM D 624
Tensile Strength A – with fiber B – without fiber	2.10 N/mm <sup>2</sup> 1.82 N/mm <sup>2</sup>	ASTM D 2370
Puncture Resistance A – with fiber B – without fiber	22.00 N 18.20 N	ASTM D 624
Shore Hardness A – with fiber B – without fiber	45 A 32 A	ASTM D 1415
Elongation at Break	>700%	ASTM D 412
Permeability	NIL	IS: 2645-1975
Crack bridging ability	≤2 mm	ASTM C 836
Set to Touch Time	10-12 hours	-
Full Cure	More than 24 Hrs.	-
Service temperature	5°C to 120°C	-
Conforms to ASTM C-836 & C-898		



**Pack Sizes**  
4 kg & 20 kg



## Features



### Excellent Waterproofing

Offers a root-resistant waterproof membrane for concrete and brick foundations, protecting against chloride and sulphate ions.



### Easy to Apply

Single-component liquid system—cold applied, simple to apply, no preheating required.



### Jointless

Provides seamless, joint-free seal across the whole surface.



### Anti-Root

This product has strong anti-root characteristics.



### Wet Area Application

Very good bonding to damp surfaces.



### High Elasticity

High elasticity for a flexible barrier across a wide temperature range.



### Excellent Adhesion

Outstanding bonding to substrate such as concrete, masonry, wood, metal, etc.



### Versatile

Suitable for various types of structures and substrates.



### Excellent Crack Bridging

Good crack bridging capacity up to 2 mm.



## Coverage

- **As a Primer Coat:** Mixing Ratio is 1: 2 (JUBIGUARD BITUELASTO : Water) By volume
- **As a Waterproof Coating:** JUBIGUARD BITUELASTO 1.5 kg/sqm in 2 coats.
- Coverage depends on the porosity of the surface and the method of application. Coverages mentioned are theoretical and under test condition. Strongly recommend to-do a Site trial before mass application.

Coverage depends on the porosity of the surface and the method of application. The coverages mentioned are theoretical and based on test conditions. It is strongly recommended to conduct a site trial before mass application to ensure optimal results.



## Shelf life



### Best before 12 months

in sealed pack under proper storage.

- Failure to comply with the recommended storage conditioning may result in premature deterioration of the product or packaging.



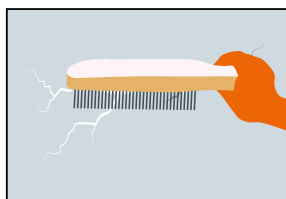
## Precautions & Limitations

- Recommended dosage to be followed to achieve desired results.
- Do not exposed coating to direct sunlight.
- JUBIGUARD BITUELASTO does not provide a trafficable finish. In case the roof needs to be made trafficable a screed needs to be laid on the finished system.



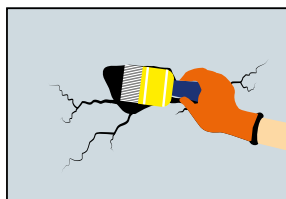
## Method of Application

### Before using Jubiguard Bituelasto



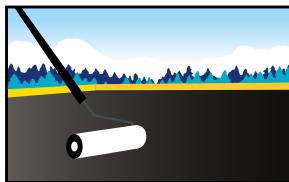
Clean the substrate thoroughly by removing dust, foreign particles, loose aggregate, and oil/grease. Methods include scarifying, grinding, water jetting, or sand blasting. Wet the surface with water to achieve a Saturated Surface Dry (SSD) condition. Fill cracks up to 10 mm with JUBIGUARD CRACKSHIELD paste. Use polymer modified mortar for larger cracks. Repair depressions, patches, pinholes, and joints with polymer modified mortar to ensure a smooth surface for application.

### Primer coat



Mix JUBIGUARD BITUELASTO and water in a 1:2 ratio (by volume) in a mixing bucket. Ensure the surface is in SSD condition before applying the primer coat. Apply one coat using a brush. Let it dry completely before applying the finish coat. Stir JUBIGUARD BITUELASTO well before use.

### Waterproof Coating



Once the Primer coat has dried, apply each coat of JUBIGUARD Bituelasto at a spread rate of 750.00 gms/sqm/ coat to achieve a Dry Film Thickness of 0.4 mm. In two coats, a total thickness of 0.8 mm will be attained.

For best results, insert Glass Fibre Reinforcement into the first coat of JUBIGUARD BITUELASTO while it is still wet.

If the coating will be exposed to sunlight, use JUBIGUARD DAMPRELIEF as a topcoat over JUBIGUARD BITUELASTO. Allow JUBIGUARD DMPRELIEF to dry for 24 hours after application



## Health & Safety

- JUBIGUARD BITUELASTO is safe, non-toxic, and eco-friendly and presents no health hazard. As with all chemicals, caution should always be exercised.
- Use protective clothing such as rubber hand gloves & safety goggles, while using JUBIGUARD BITUELASTO.
- In case of contact with skin, wash with plenty of water.

**For professional use only. Keep out of reach of children.** This Information and our technical advice - whether verbal, in writing, or by way of trials - are given in good faith but without warranty, and this also applies where proprietary rights of third parties are involved. Our advice does not release you from the obligation to verify the information currently provided - especially that contained in our safety data and technical information sheets - and to test our products as to their suitability for the intended processes and uses. The application, use, and processing of our products and the products manufactured by you on the basis of our technical advice are beyond our control and, therefore, entirely your own responsibility.

Version No. VN01/04/2024. Please note that this datasheet supersedes all previous versions

**For Feedback/complaints, write to Product Manager, CPD, Jubilant Agri and Consumer Products Limited**

Plot No. 142, Chimes, 3rd Floor, Sector 44, Gurugram 122003, Haryana, India Tel.: +91 120 6290100 E-mail: jivanjor@jubl.com Website: jacpl.co.in